

**ITEM 43. CAR SHARE – OCONNOR STREET CHIPPENDALE**

**TRIM RECORD NO: 2016/447850**

**RECOMMENDATION**

It is recommended that the Committee endorse the reallocation of the kerb space on the southern side of O'Connor Street, Chippendale, west of O'Connor Street as follows:

- Between the points 45 metres and 50 metres west of Carlton Street as "No Parking Car Share Vehicles Excepted"; and
- Between the points 50 metres and 51.5 metres west of Carlton Street as "Motorbike Parking".

Subject to the following condition:

- (A) The City will only install signage for the car share space when Hertz 24/7 has a car to occupy the space.

**VOTING MEMBERS FOR THIS ITEM**

<b><i>Voting Members</i></b>	<b><i>Support</i></b>	<b><i>Object</i></b>
City of Sydney		
Roads and Maritime Services		
NSW Police – Redfern LAC		
Representative for the Member for Newtown		

**DECISION**

**BACKGROUND**

The City is committed to providing dedicated parking for car sharing across the Local Government Area as part of a Council-approved Car Share Policy. A submission has been received from Hertz 24/7 for a car share space in O'Connor Street, Chippendale, west of Carlton Street.

**COMMENTS**

The kerb space on the southern side of O'Connor Street, Chippendale, between Carlton and Abercrombie Streets, Chippendale is signposted as "2P Ticket 8am-10pm Permit Holders Excepted Area 32".

The car share space will be installed and managed in accordance with the Roads and Maritime Service's Technical Direction 2007/04 and the provisions of the Council-approved Car Share Policy.

Car sharing is popular in more than 600 cities worldwide, and research has shown substantial environmental benefits. Car sharing reduces total urban driving, reduces household vehicle holdings, and increases walking, cycling and public transport use.

On average, each car share vehicle in the City can replace up to 12 private vehicles that would otherwise compete for parking.

Current membership is approximately 31,188, of which 9,793 are business members.

As of August 2016, there were 133 Hertz 24/7 members in Postcode 2008.

Within a 250 metre radius of this location, there are currently two spaces allocated for Hertz 24/7 car share vehicles.

### **CONSULTATION**

The City consulted local residents and businesses in the area. There were 474 letters sent out with no responses supporting the proposal and one response opposing the proposal.

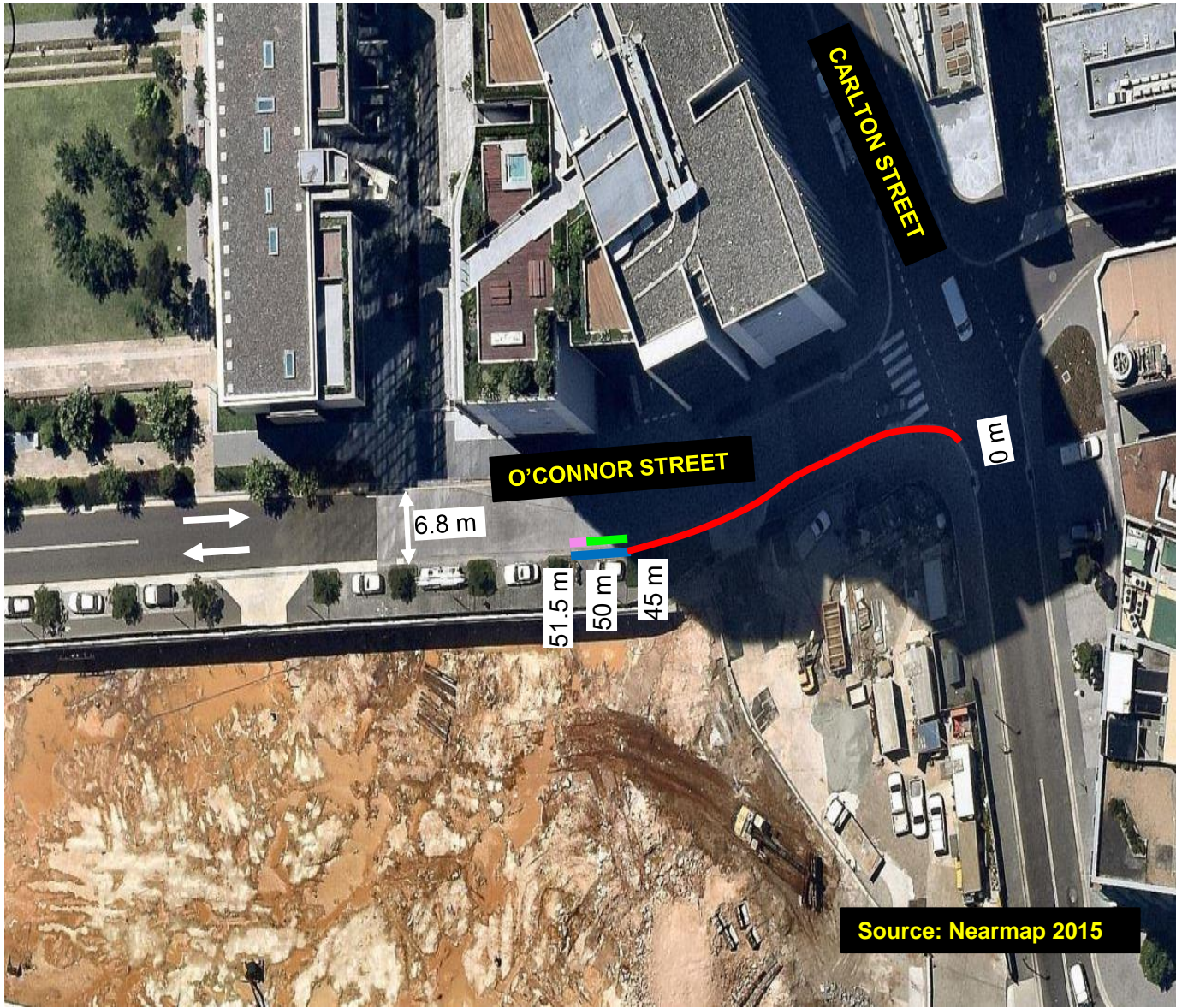
### **FINANCIAL**

Funds are available in the current budget.

### **ATTACHMENTS**

Car Share – O'Connor Street Chippendale

Claudia Calabro, Business Support Officer



**EXISTING: "2P TICKET 8AM-10PM, PERMIT HOLDERS EXCEPTED AREA 32"**

**PROPOSED: "NO PARKING AUTHORISED CAR SHARE VEHICLES EXCEPTED ZONE"**

**PROPOSED: "P MOTORBIKE ONLY"**

## PROPOSAL

O'CONNOR STREET  
WEST OF CARLTON STREET  
CHIPPENDALE

